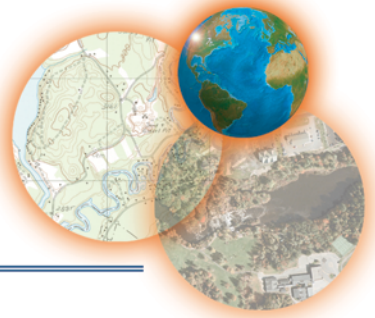


# DELORME GPS2056EVK Evaluation Kit



## Highlights

- Demonstrates the full functionality of the DeLorme GPS2056-10 GPS Module
- Standard RS-232 9-pin D-type Connectors for NMEA and Debug
- Standard NMEA Output Strings
- USB type B connection
- SMA Coax connector for Active Antenna
- Power sourced from car 12V DC, 110/220V DC converter, USB, or two AA Batteries
- Power/Battery Status LED
- GPS fix status LED
- Two user I/O ports
- Kit Includes:
  - Evaluation board in custom plastic case
  - DC Power Supply
  - Active Antenna
  - Documentation
  - Street Atlas USA 2007
  - DeLorme Serial Emulator (or test dll TBD)



## Overview

The DeLorme GPS2056EVK Evaluation Kit is designed to provide all of the components necessary to easily and efficiently evaluate the suitability, performance and capabilities of the DeLorme GPS2056-10 GPS modules.

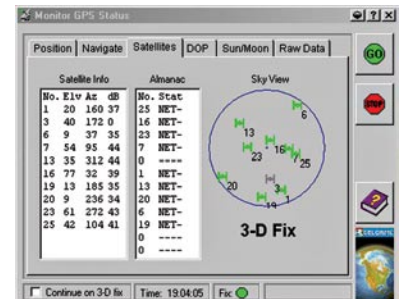
The user just connects the provided antenna and power source, and attaches the RS-232 port (or USB) to a host computer running the DeLorme Serial Emulator in order to receive satellite signals and produce positional data.



The Evaluation kit can be powered from four different sources for maximum flexibility. A standard 110/220V 2.5mm DC converter is supplied or USB power can be used. The Kit can also be powered from two AA batteries or 12V car sources to support portable field testing.

A copy of Street Atlas USA 2007 is included to demonstrate the seamless interface of GPS positional data to DeLorme software mapping products.

The Evaluation Kit also serves as a reference design to show how easy a GPS navigation system can be developed around DeLorme GPS modules. Full Schematics, Board Layouts, and bill of materials are provided to demonstrate the functional components of a basic GPS receiver system.



## DeLorme GPS & Mapmaking Expertise

DeLorme offers the expertise needed for OEMs looking to integrate GPS navigation solutions into their own business plans. In addition to our GPS hardware expertise and relationship with STMicroelectronics, we also have a large staff of dedicated mapmakers and software engineers building innovative and affordable solutions. The DeLorme brand is widely recognized and used by millions of satisfied customers.

Part Number: GPS2056EVK

Availability: October, 2006