

**ETG Inc.**

8599 Venice BLVD, Suite K, Los Angeles CA 90034, U. S. A.

Phone: + 1 (310) 202-6400

Fax: + 1 (310) 202-6406

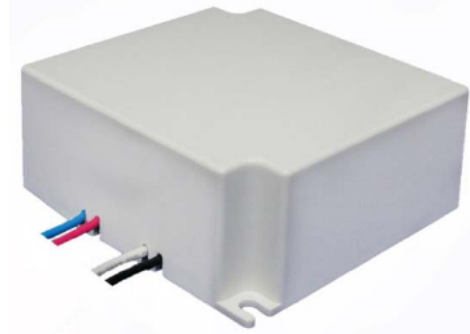
<http://www.etgtech.com/>EMail: info@etgtech.com

LDP040-240-00

1660mA LED Driver 40W

Features

- Plastic case for IP64
- Over voltage protection
- Over current protection
- Constant voltage
- Constant current
- Level B EMI filter
- High efficiency & High quality
- MTBF 100,000hrs min. at 25 deg. C ambient



Electrical specifications

IP64 cRU[®]us FC

	Parameters	Condition	Sym bol	Min	Nom	Max	Unit
AC Input	Input Voltage Range	Universal	Vin	90	100-240	264	Vrms
	Input Current	90VAC Full Load	Iin	-	-	1.0	A
	Line Frequency Range	90 - 264VAC Input	Freq.	47	50-60	63	Hz
	Inrush Current	230VAC, Cold Start		-	-	10	A
	Power Factor	230VAC, Full Load	PF	0.9	-	-	
	Efficiency	115/230VAC		80	-	-	%
Output	Output Power	Max. Output Power	Po	-	40	-	W
	DC Voltage	Constant Voltage	Vo	-	24	-	V
	DC Voltage Range	LED String Voltage	Vf	12	-	24	V
	Constant Current Range	LED Driver Current	If	1577	1660	1743	mA
	Ripple & Noise	Constant Voltage Mode	R/N	-	-	2000	mV
Protection	Over Current	Over Current Protection	OCP	95	-	105	%
	Short Circuit	Auto Recovery	SCP	-	-	-	
	Over Voltage	Over Voltage Protection	OVP	-	-	34	V
Environmental	Operating Temperature		Ta	-20	-	60	deg. C
	Storage Temperature		Ts	-40	-	80	deg. C
International Standard	Safety	UL1310 CLASS II, cUL/CAN/CSA C22.2 NO. 223-M91, EN55015, EN61547					
	EMI	EN55015, FCC PART 15					
	Water Proof	IP64					
Reliability	MTBF	At 25 deg. C Full Load		100K	-	-	hrs
	Burn-In	At 40 deg. C +/- 5 deg. C		4	-	-	hrs



ETG Inc.

8599 Venice BLVD, Suite K, Los Angeles CA 90034, U. S. A.

Phone: + 1 (310) 202-6400

Fax: +1 (310) 202-6406

<http://www.etgtech.com/>

E-Mail: info@etgtech.com

LDP040 Series-Wiring

LED Driver 40W

Outline Drawing

