

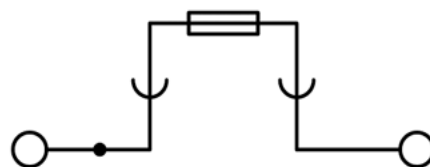
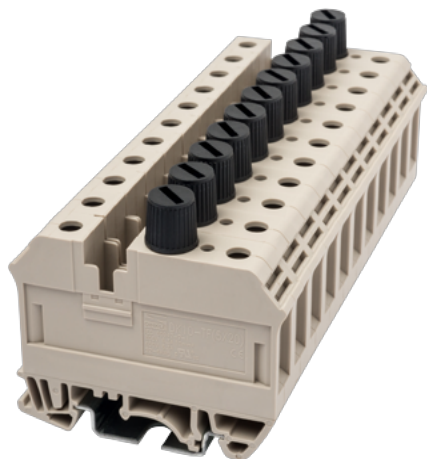
# DK10-TF(5X20)

DIN

>

:2021-09-08

:1.2



circuit diagram

M4, 600V, 6.3A, Beige (default)

	DIN rail terminal blocks, Fuse terminal blocks
	Fuse terminal blocks
	Beige (default)
	Screw connection
	Rail mounting
(mm)	12
(mm)	61.63
(mm)	47.2
	Single level
	2
	PA
	I
UL 94	V0
	-IEC
(V)	800

(A)		6.3
(III/2)(V)		800
(II/2)(KV)		8
(III/2)(KV)		8
(III/3)(KV)		8
(mm <sup>2</sup> )		1.5
(mm <sup>2</sup> )		10
(mm <sup>2</sup> )		1.5
(mm <sup>2</sup> )		10
		M4
Width)(mm)	(Blade thickness x	0.8x4.0
Philips		PH2
(N.m)		1.8
		12~16
		TS-35
		NO
		NO

### -UL

(UL/CUL Group B)(V)		600
(UL/CUL Group B)(A)		6.3
(UL/CUL Group D)(V)		600
(UL/CUL Group D)(A)		5
UL/CUL	AWG	22
UL/CUL	AWG	6
UL/CUL	AWG	22
UL/CUL	AWG	6

### &

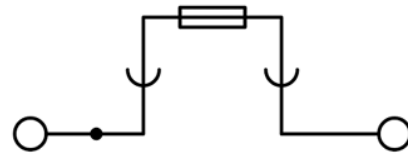
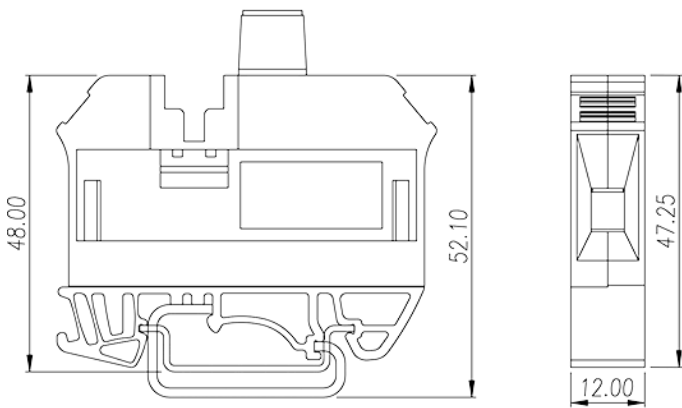
(YES or NO)		YES
가 (YES or NO)		YES
		120
		-40

### UL

(Group B)(AWG)	22~6
(Group B)(V)	600
(Group B)(A)	6.3
(Group D)(AWG)	22~6
(Group D)(V)	600
(Group D)(A)	5

## CUL

(Group B)(AWG)	22~6
(Group B)(V)	600
(Group B)(A)	6.3
(Group D)(AWG)	22~6
(Group D)(V)	600
(Group D)(A)	5



circuit diagram





### TS-35

DIN-Rail

For DP / DP-PE / DK / DK-PE / AK / AK-PE / AK..P series. Material is iron.  
Length of 1000mm / 2000mm.



### DS16-XXP

Screw-on bridge

For DK16H. Grey color. Using UL94-V0 class of insulation material.



### CSC-16XXPN

Insertion Bridge

For DK10-TF. Gray color. Using UL94-V0 class of insulation material.



### TM45W

Marking Label

For BEST APPLICATION : DP10, DP10-TN, DP10-PE, DP10-TN-PE  
AVAILABLE APPLICATION : DP16, DP16-PE, DK10-TF(5X20) White color.  
Using UL94-V2 class of insulation material.