

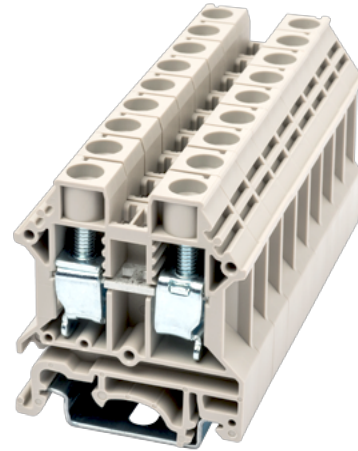
# DK10N

DIN

>

:2021-09-08

:1.2



M4, 600V, 60A, Beige (default)

	DIN rail terminal blocks, Feed through terminal blocks
	Feed through terminal blocks
	Beige (default)
	Screw connection
	Rail mounting
(mm)	10
(mm)	42.9
(mm)	50.2
	Single level
	2
	PA
	I
UL 94	V0

-IEC



(V)		1000
(A)		57
(III/2)(V)		1000
(II/2)(KV)		8
(III/2)(KV)		8
(III/3)(KV)		8
(mm <sup>2</sup> )		0.5
(mm <sup>2</sup> )		10
(mm <sup>2</sup> )		0.5
(mm <sup>2</sup> )		10
(mm <sup>2</sup> )	,	0.5
(mm <sup>2</sup> )	,	10
(mm <sup>2</sup> )	,	0.5
(mm <sup>2</sup> )	,	10
2	(mm <sup>2</sup> )	6
2	(mm <sup>2</sup> )	6
(mm <sup>2</sup> )	2 ,	0.5
(mm <sup>2</sup> )	2 ,	4
(mm <sup>2</sup> )	2 ,	0.5
(mm <sup>2</sup> )	2 ,	6
		M4
Width)(mm)	(Blade thickness x	1.0x5.5
Philips		PH2
(N.m)		1.3
		12~14
		TS-35
		YES
		NO

-UL



(UL/CUL Group B)(X)		600
(UL/CUL Group C)(V)		600
(UL/CUL Group C)(A)		60
(UL/CUL Group D)(V)		600
(UL/CUL Group D)(A)		5
UL/CUL	AWG	20
UL/CUL	AWG	6
UL/CUL	AWG	20
UL/CUL	AWG	6

&amp;

(YES or NO)		YES
가 (YES or NO)		YES
		120
		-40

**UL**

(Group B)(AWG)		20~6
(Group B)(V)		600
(Group B)(A)		60
(Group C)(AWG)		20~6
(Group C)(V)		600
(Group C)(A)		60
(Group D)(AWG)		20~6
(Group D)(V)		600
(Group D)(A)		5

**CUL**

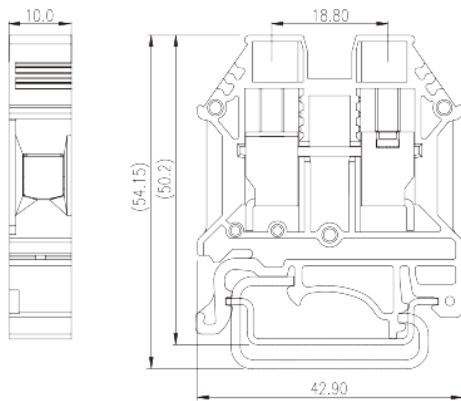
(Group B)(AWG)		20~6
(Group B)(V)		600
(Group B)(A)		60
(Group C)(AWG)		20~6
(Group C)(V)		600
(Group C)(A)		60

(Group D) (AWG)	20~6
(Group D) (V)	600
(Group D) (A)	5







**VDE**

(mm <sup>2</sup> )	0.5~10
(V)	1000
(A)	57

(mm <sup>2</sup> )	0.5~10
(V)	630
(A)	57



**DK10NC**

	<p>End cover For DK10N Grey color. Using UL94-V0 class of insulation material.</p>
	<p><b>TS-35</b> DIN-Rail For DP / DP-PE / DK / DK-PE / AK / AK-PE / AK..P series. Material is iron. Length of 1000mm / 2000mm.</p>
	<p><b>DSS10N-XXP</b> Plug-in bridge For DK10N / DK10D. Red color. Using UL94V0 class insulation material.</p>
	<p><b>DKNSPS-002</b> Partition Plate For DK6N / DK10N. Grey color. Using UL94-V0 class of insulation material.</p>
	<p><b>CSC-10XXPN</b> Insertion Bridge For DK10N / DK10D. Grey color. Using UL94-V0 class of insulation material.</p>
	<p><b>TM49W</b> Marking Label For BEST APPLICATION : DP6, DP6-TN, DP6-TR, DP6-PE, DP6-TN-PE, DP6-TR-PE, DPTD6, DPTL6, DPTD6-D05, DPTD6-D06, DK6N, DK6N-TN, DK6N-PE, DKTD6N, DKTD6, DKTL6, PM6N AVAILABLE APPLICATION : DK10N, DK10N-TN, DK10N-PE, DK10-PE, DK16-PE, DK16N-PE, DK16H, DK35H, DK35H-PE, DK50, DK50-PE, DK95-PE, DK95, DK150, DK240 DKM5, DKM6, DKM8, DKM10, DKM12, DKMW8, DKM6-2, DKM8-2, DKM10-2, SS4, SS5, SS6, SS7, SS8, SS11 White color. Using UL94-V2 class of insulation material.</p>