

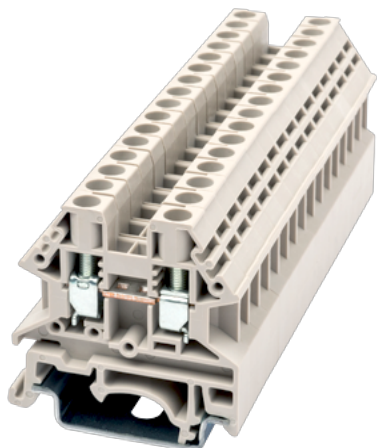
# DK4N

DIN

>

:2021-09-08

:1.2



M3, 600V, 30A, Beige (default)

	DIN rail terminal blocks, Feed through terminal blocks
	Feed through terminal blocks
	Beige (default)
	Screw connection
	Rail mounting
(mm)	5.1
(mm)	40.7
(mm)	39.6
	Single level
	2
	PA
	I
UL 94	V0

-IEC



(V)		1000
(A)		32
(III/2)(V)		1000
(II/2)(KV)		8
(III/2)(KV)		8
(III/3)(KV)		8
(mm <sup>2</sup> )		0.34
(mm <sup>2</sup> )		4
(mm <sup>2</sup> )		0.34
(mm <sup>2</sup> )		4
(mm <sup>2</sup> )	,	0.34
(mm <sup>2</sup> )	,	4
(mm <sup>2</sup> )	,	0.34
(mm <sup>2</sup> )	,	4
2	(mm <sup>2</sup> )	2.5
2	(mm <sup>2</sup> )	2.5
(mm <sup>2</sup> )	2 ,	0.34
(mm <sup>2</sup> )	2 ,	1.5
2	(mm <sup>2</sup> ) ,	0.5
2	(mm <sup>2</sup> ) ,	2.5
		M3
Width)(mm)	(Blade thickness x	0.6x3.5
Philips		PH1
(N.m)		0.6
		9~11
		TS-35
		YES
		NO

-UL



(UL/CUL Group B)(X)		600
(UL/CUL Group C)(V)		600
(UL/CUL Group C)(A)		30
(UL/CUL Group D)(V)		600
(UL/CUL Group D)(A)		5
UL/CUL	AWG	22
UL/CUL	AWG	10
UL/CUL	AWG	22
UL/CUL	AWG	10

&amp;

(YES or NO)		YES
가 (YES or NO)		YES
		120
		-40

**UL**

(Group B)(AWG)		22~10
(Group B)(V)		600
(Group B)(A)		30
(Group C)(AWG)		22~10
(Group C)(V)		600
(Group C)(A)		30
(Group D)(AWG)		22~10
(Group D)(V)		600
(Group D)(A)		5

**CUL**

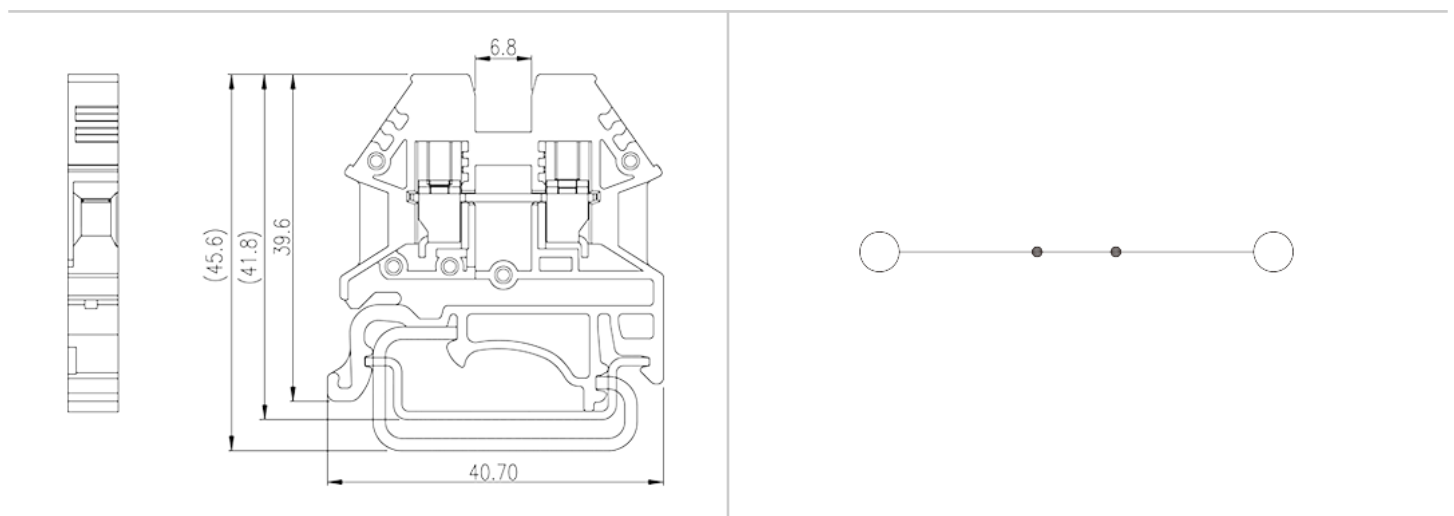
(Group B)(AWG)		22~10
(Group B)(V)		600
(Group B)(A)		30
(Group C)(AWG)		22~10
(Group C)(V)		600
(Group C)(A)		30






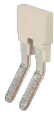

(Group D) (AWG)	22~10
(Group D) (V)	600
(Group D) (A)	5

**VDE**

(mm <sup>2</sup> )	0.34~4
(V)	1000
(A)	32

(mm <sup>2</sup> )	0.34~4.0
(V)	630
(A)	32


**DSS4N-XXP**

	<p><b>Plug-in bridge</b> For DK4N / DK4N-TN / DK4N-TR / DK4D / DKK4N. Red color. Using UL94-V0 class of insulation material.</p>
	<p><b>TS-35</b> DIN-Rail For DP / DP-PE / DK / DK-PE / AK / AK-PE / AK..P series. Material is iron. Length of 1000mm / 2000mm.</p>
	<p><b>DKNSPS-001</b> Partition Plate For DK2.5N / DK4N. Grey color. Using UL94-V0 class of insulation material.</p>
	<p><b>DKNSPS-005</b> Partition Plate For DK2.5N / DK4N Grey color. Using UL94-V0 class of insulation material.</p>
	<p><b>DK4NC</b> End cover For DK2.5N / DK4N / DK2.5N-TP / DK2.5N-TG / DK2.5N-CP / DK4N-TP / DK4N-TG / DK4N-CP Grey color. Using UL94-V0 class of insulation material.</p>
	<p><b>CSC-4XXPN</b> Insertion Bridge For DK4N / DK4N-TN / DK4N-TR / DK4N-TP / DK4N-TG / DK4D / DKK4N. Grey color. Using UL94-V0 class of insulation material.</p>
	<p><b>TM48W</b> Marking Label For DP4, DP4-TN, DP4-TR, DP4-PE, DP4-TN-PE, DP4-TR-PE, SS2 DK4N, DK4N-TN, DK4N-TR, DKK4N, DKK4N-PV, DK4N-PE, DK4N-TN-PE, DK4N-TR-PE, DK4-PE, DK4N-TP, DK4N-TG, DK4N-CP, DKK4N-TP, DKK4N-TG, DKK4N-CP, PM4N White color. Using UL94-V2 class of insulation material.</p>