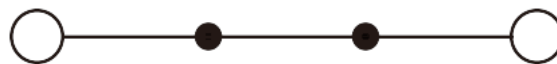
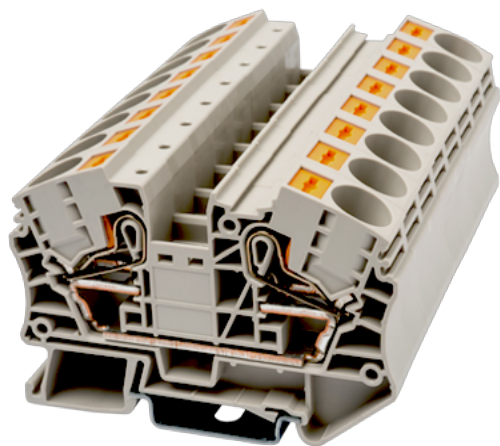


DP16

DIN

>

:2021-09-08



600V, 82A, Beige (default)

	Single level Feed-Through Terminal Block, Push-in Design
	Single level Feed Through Terminal Block
	Beige (default)
	Push-in Design
	Rail Mounting
(mm)	76.5
(mm)	12
(mm)	54.3
()	1P
	Single level
	2
	PA
	I
UL 94	V0
	500M at DC 500V

-IEC

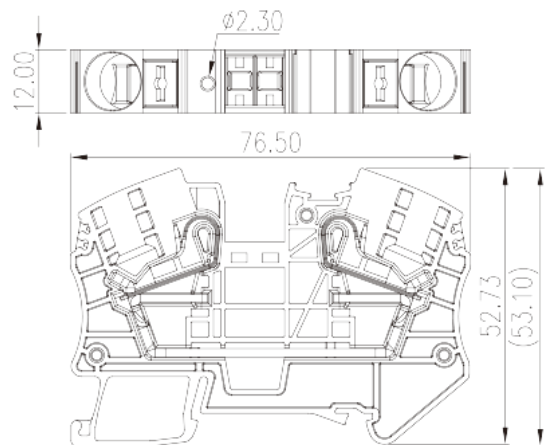
(V)	1000
(A)	76
(III/3)(V)	1000
(III/3)(KV)	8
(mm ²)	0.5
(mm ²)	25
(mm ²)	0.5
(mm ²)	16
(mm ²) , ,	0.5
(mm ²) , ,	16
(mm ²) , ,	0.5
(mm ²) , ,	16
² (mm ²) , ,	1.5
² (mm ²) , ,	4
Width)(mm) (Blade thickness x	1.0x5.5
	18
	TS-35
	YES
	NO

-UL

(UL/CUL Group B)(V)	600
(UL/CUL Group B)(A)	82
(UL/CUL Group C)(V)	600
(UL/CUL Group C)(A)	82
UL/CUL AWG	20
UL/CUL AWG	4
UL/CUL AWG	20
UL/CUL AWG	4

&

(YES or NO)	YES
가 (YES or NO)	YES
	120
	-40



TS-35C

DIN rail end cap

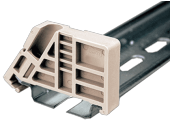
For TS-35 rail. Black color. Using UL94-V2 class of insulation material.



TS-35

DIN-Rail

For DP / DP-PE / DK / DK-PE / AK / AK-PE / AK..P series. Material is iron.
Length of 1000mm / 2000mm.



SS11

End Bracket

For TS-35, TS-35/15 rails. Grey color. Using UL94-V0 class of insulation material.



DSD01-16XXN

Plug-in bridge

For AK16 / AK16-TN. Red color. Using UL94-V0 class of insulation material.



TM45W

Marking Label

For BEST APPLICATION : DP10, DP10-TN, DP10-PE, DP10-TN-PE

AVAILABLE APPLICATION : DP16, DP16-PE, DK10-TF(5X20) White color.

Using UL94-V2 class of insulation material.



TM50W

Marking Label

For BEST APPLICATION : DP10, DP10-TN, DP10-PE, DP10-TN-PE

AVAILABLE APPLICATION : DP16, DP16-PE White color. Using UL94-V2

class of insulation material.



DP16C

End Cover

For DP16 Grey color. Using UL94-V0 class of insulation material.