

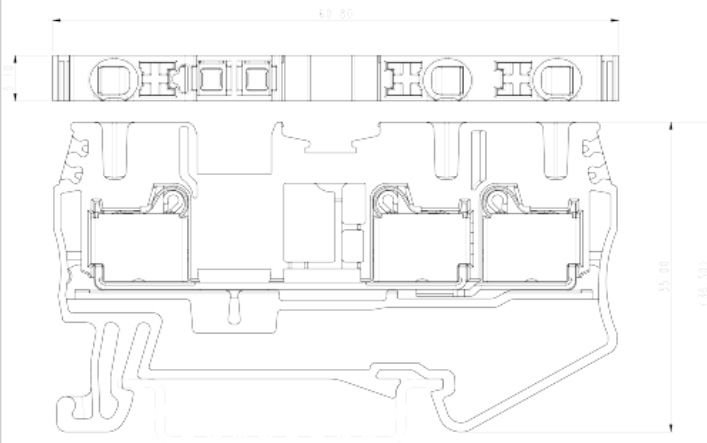
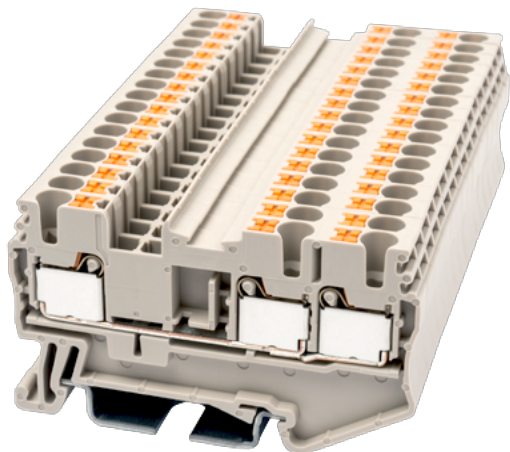
DP2.5-TN

DIN

>

:2021-09-08

:1.1



600V, 20A, Beige (default)

	Single level Feed-Through Terminal Block, Push-in Design
	Single level Feed Through Terminal Block
	Beige (default)
	Push-in Design
	Rail Mounting
(mm)	60.8
(mm)	5.1
(mm)	35
()	1P
	Single level
	3
	PA
	I
UL 94	V0
	500M at DC 500V

-IEC

(V)	800
(A)	24
(III/3)(V)	800
(III/3)(KV)	8
(mm ²)	0.14
(mm ²)	4
(mm ²)	0.14
(mm ²)	2.5
(mm ²) , ,	0.25
(mm ²) , ,	2.5
(mm ²) , ,	0.25
(mm ²) , ,	2.5
² (mm ²) , ,	0.5
Width)(mm) (Blade thickness x	0.6x3.5
	10
	TS-35
	YES
	NO

-UL

(UL/CUL Group B)(V)	600
(UL/CUL Group B)(A)	20
(UL/CUL Group C)(V)	600
(UL/CUL Group C)(A)	20
UL/CUL AWG	26
UL/CUL AWG	12
UL/CUL AWG	26
UL/CUL AWG	12

&

--	--



가 (YES or NO)	YES
	120
	-40

UL

(Group B)(AWG)	26~12
(Group B)(V)	600
(Group B)(A)	20
(Group C)(AWG)	26~12
(Group C)(V)	600
(Group C)(A)	20

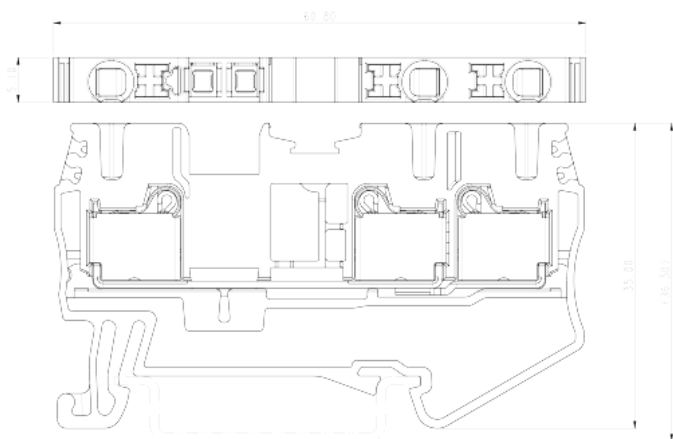
CUL

(Group B)(AWG)	26~12
(Group B)(V)	600
(Group B)(A)	20
(Group C)(AWG)	26~12
(Group C)(V)	600
(Group C)(A)	20

VDE

(mm ²)	0.14~2.5
(V)	800
(A)	24

--	--



TS-35C

DIN rail end cap

For TS-35 rail. Black color. Using UL94-V2 class of insulation material.



DSD03-1.5/2.5

Plug-in bridge

For DP1.5 / DP2.5 / DP1.5-TN / DP2.5-TN / DP1.5-TR / DP2.5-TR Red color.
Using UL94-V0 class of insulation material.



AKSPS-003

Partition

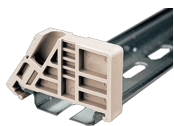
For AK1.5-TN / AK2.5-TR / AK4-TN / AK2.5-TP / AK2.5-TG / AK4-TG /
AK2.5-CP / AK4-CP / AK4-TF(5X20) Gray color. Using UL94-V0 class of
insulation material.



TS-35

DIN-Rail

Length of 1000mm / 2000mm.
For DP / DP-PE / DK / DK-PE / AK / AK-PE / AK..P series. Material is iron.



SS11

End Bracket

For TS-35, TS-35/15 rails. Grey color. Using UL94-V0 class of insulation material.



DSD01-2.5XXN

Plug-in bridge

For DP2.5/AK2.5/AK2.5-TN/AK2.5-TR/AKK2.5/AK2.5-TP/AK2.5-TN-TP/AK2.5-TR-TP/AK2.5-TG/AK2.5-TN-TG/AK2.5-TR-TG/AK2.5-CP/AK2.5-TN-CP/AK2.5-TR-CP/AKK2.5-D01/AKK2.5-D02/AKK2.5-D03/AKK2.5-D04 Red color. Using UL94-V0 class of insulation material.



DSD03-2.5/4

Plug-in bridge

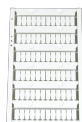
For DP2.5 / DP4 / DP2.5-TN / DP4-TN / DP2.5-TR / DP4-TR Red color. Using UL94-V0 class of insulation material.



TM42W

Marking Label

For BEST APPLICATION : DP2.5, DP2.5-TN, DP2.5-TR, DPP2.5, DP2.5-3L, DP2.5-3L-PV, DP2.5-PE, DP2.5-TN-PE, DP2.5-TR-PE, DPP2.5-PE, DP2.5-3L-L3PE, DK2.5S, PM2.5WN, PMM2.5WN AVAILABLE APPLICATION : DP2.5-ES, DP2.5/1P, DP2.5PG-XXP, DKES1.5, DKES1.5-XXP, DKES1.5M-XXP White color. Using UL94-V2 class of insulation material.



TM47W

Marking Label

For BEST APPLICATION : DP2.5, DP2.5-TN, DP2.5-TR, DP2.5-PE, DP2.5-TN-PE, DP2.5-TR-PE, DP2.5/1P, DK2.5N, DK2.5N-TN, DK2.5N-TR, DKK2.5N, DKK2.5N-PV, DK2.5N-PE, DK2.5N-TN-PE, DK2.5N-TR-PE, DK2.5N-TP, DK2.5N-TG, DK2.5N-CP, DKK2.5N-TP, DKK2.5N-TG, DKK2.5N-CP, PM2.5N AVAILABLE APPLICATION : DK2.5-PE, DKES1.5, DKES1.5-XXP, DKES1.5M-XXP White color. Using UL94-V2 class of insulation material.

DP2.5C-TN



End Cover

For DP2.5-TN Grey color. Using UL94-V0 class of insulation material.