

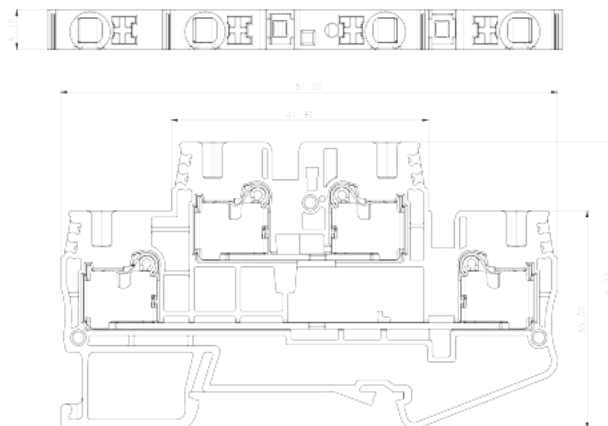
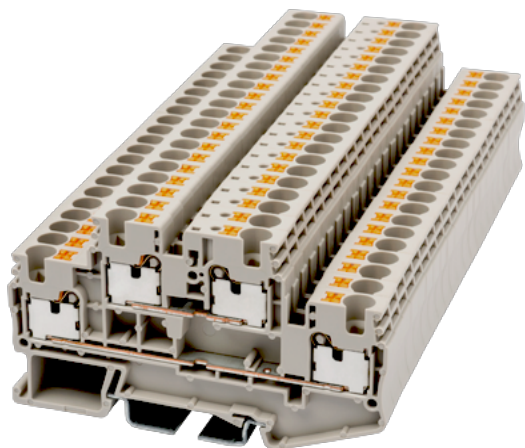
# DPP4

DIN

>

:2021-09-08

:1.1



300V, 30A, Beige (default)

	Bi-level Feed-Through Terminal Block, Push-in Design
	Bi level Feed Through Terminal Blocks
	Beige (default)
	Push-in Design
	Rail Mounting
(mm)	81
(mm)	6.1
(mm)	46
( )	1P
	Double level
	4
	PA
	I
UL 94	V0
	500M at DC 500V

**-IEC**

(V)	500
(A)	28
(III/3)(V)	500
(III/3)(KV)	6
(mm <sup>2</sup> )	0.2
(mm <sup>2</sup> )	6
(mm <sup>2</sup> )	0.2
(mm <sup>2</sup> )	4
(mm <sup>2</sup> ) , ,	0.25
(mm <sup>2</sup> ) , ,	4
(mm <sup>2</sup> ) , ,	0.25
(mm <sup>2</sup> ) , ,	4
<sup>2</sup> (mm <sup>2</sup> ) , ,	0.5
<sup>2</sup> (mm <sup>2</sup> ) , ,	1
Width)(mm) (Blade thickness x	0.8x4.0
	12
	TS-35
	YES
	NO

**-UL**

(UL/CUL Group B)(V)	300
(UL/CUL Group B)(A)	30
(UL/CUL Group C)(V)	300
(UL/CUL Group C)(A)	30
(UL/CUL Group D)(V)	600
(UL/CUL Group D)(A)	5
UL/CUL AWG	24
UL/CUL AWG	10
UL/CUL AWG	24



UL/CUL	AWG	10
<b>&amp;</b>		
	(YES or NO)	YES
가	(YES or NO)	YES
		120
		-40

### UL

	(Group B)(AWG)	24~10
	(Group B)(V)	300
	(Group B)(A)	30
	(Group C)(AWG)	24~10
	(Group C)(V)	300
	(Group C)(A)	30

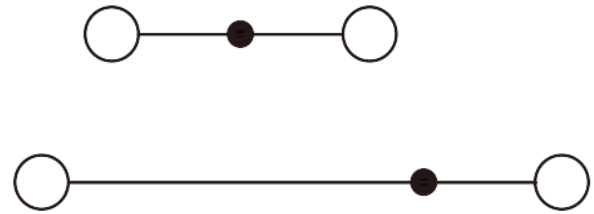
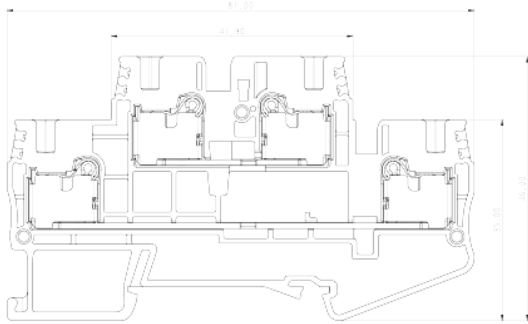
### CUL

	(Group B)(AWG)	24~10
	(Group B)(V)	300
	(Group B)(A)	30
	(Group C)(AWG)	24~10
	(Group C)(V)	300
	(Group C)(A)	30

### VDE

	(mm <sup>2</sup> )	0.2~4
	(V)	500
	(A)	28

--	--



### TS-35C

DIN rail end cap

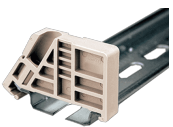
For TS-35 rail. Black color. Using UL94-V2 class of insulation material.



### TS-35

DIN-Rail

For DP / DP-PE / DK / DK-PE / AK / AK-PE / AK..P series. Material is iron. Length of 1000mm / 2000mm.



### SS11

End Bracket

For TS-35, TS-35/15 rails. Grey color. Using UL94-V0 class of insulation material.



### DSD01-4XXN

Plug-in bridge

For DP4 / AK4 / AK4-TN / AK4-TR / AKK4 / AK4-TG / AK4-TP / AK4-CP / AK4-TF(5X20) Red color. Using UL94-V0 class of insulation material.



## TM43W

Marking Label

For BEST APPLICATION : DP4, DP4-TN, DP4-TR, DPP4, DP4-PE, DP4-TN-PE, DP4-TR-PE, DPP4-PE, DP4-TFU, DP4-TFU(5X20), DK4S, SS2, SS7

White color. Using UL94-V2 class of insulation material.



## DPP4C

End Cover

For DPP4 Grey color. Using UL94-V0 class of insulation material.